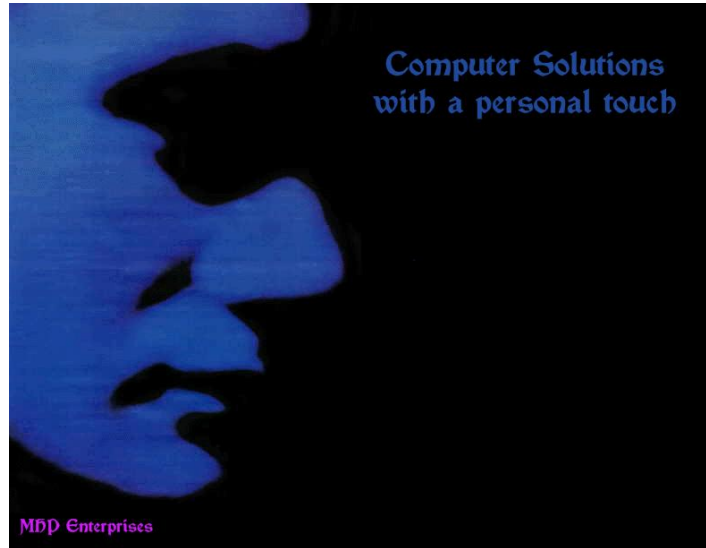


# Ubuntu Tips & Tricks



Contributions by:

*The How-To-Geek*  
*The Source*  
*MS Technet*  
*Simple Help*  
*Mysticgeek*  
*Mark H. Priest*

## SET WINDOWS AS DEFAULT OS WHEN DUAL BOOTING UBUNTU

When you install a dual-boot of Ubuntu, one of the frustrating things that you'll immediately notice is that Ubuntu is now set as the default operating system in the Grub loader. There's an easy way to switch back to using Windows as the default.

To make this change, you'll first have to boot into Ubuntu, and then run the following command:

```
sudo gedit /boot/grub/menu.lst
```

Find this section of the file:

```
## default num
# Set the default entry to the entry number NUM. Numbering starts from 0, and
# the entry number 0 is the default if the command is not used.
#
# You can specify 'saved' instead of a number. In this case, the default entry
# is the entry saved with the command 'savedefault'.
# WARNING: If you are using dmraid do not change this entry to 'saved' or your
# array will desync and will not let you boot your system.
default 0
```

The important line is the last one. You will need to change that number 0 to match the Windows boot section. Typically it's always going to be 4 on a default dual-boot configuration. Change this value to 4, and then save and reboot your machine. You should go into Windows instead of Ubuntu automatically.

Note: The blocks at the bottom of the file match the items in the menu. You can change this value to match whichever item you want as default, just remember that numbering starts at 0.

## FIND FILES CONTAINING SEARCH TERMS ON UBUNTU

To find files containing keywords, linux has a powerful command called `grep`, which you can use to find the lines inside any file or a list of files. I use this very often to find a function declaration in a set of `php` files that I'm unfamiliar with.

Let's say we are looking for the definition of a function called `wp_content_filterize`, and we don't know where to start. Let's try using `grep`...

```
grep -i -n 'function wp_content_filterize' *
```

We should see the output right on the console

```
functions.php:18:function wp_content_filterize($thefilter) {
```

Now we know that the function definition is found in the file `functions.php`, on line 18.

# INSTALL SAMBA SERVER ON UBUNTU

If you want to share files between your Ubuntu and Windows computers, your best option is to use Samba file sharing.

To install, first open a terminal window and enter the following command:

```
sudo apt-get install samba smbfs
```

We've got samba installed, but now we'll need to configure it to make it accessible. Run the following command to open the configuration file, substituting your editor of choice:

```
sudo gedit /etc/samba/smb.conf
```

Find this section in the file:

```
##### Authentication #####  
# "security = user" is always a good idea. This will require a Unix account  
# in this server for every user accessing the server. See  
# /usr/share/doc/samba-doc/htmldocs/Samba-HOWTO-Collection/ServerType.html  
# in the samba-doc package for details.  
; security = user
```

Uncomment the security line, and add another line to make it look like this:

```
security = user  
username map = /etc/samba/smbusers
```

This will set Samba to use the smbusers file for looking up the user list.

## *Create a Samba User*

There are two steps to creating a user. First we'll run the smbpasswd utility to create a samba password for the user.

```
sudo smbpasswd -a <username>
```

Next, we'll add that username to the smbusers file.

```
sudo gedit /etc/samba/smbusers
```

Add in the following line, substituting the username with the one you want to give access to. The format is <ubuntuusername> = "<samba username>". You can use a different samba user name to map to an ubuntu account, but that's not really necessary right now.

```
<username> = "<username>"
```

# Share Ubuntu Home Directories using Samba

Samba Server allows you to share the home directories of users automatically. This can be useful so that you don't have to manually create every share for every user. First, make sure that you've installed Samba server.

To share the home directories, open up smb.conf with the following command:

```
sudo gedit /etc/samba/smb.conf
```

Find this section of the file, and make it match the following:

```
#===== Share Definitions =====  
  
# Un-comment the following (and tweak the other settings below to suit)  
# to enable the default home directory shares. This will share each  
# user's home directory as \\server\username  
[homes]  
comment = Home Directories  
browseable = yes  
  
# By default, \\server\username shares can be connected to by anyone  
# with access to the samba server. Un-comment the following parameter  
# to make sure that only "username" can connect to \\server\username  
valid users = %S  
  
# By default, the home directories are exported read-only. Change next  
# parameter to 'yes' if you want to be able to write to them.  
writable = yes
```

Now you should be able to map a drive on windows using the following share format:

```
\\ubuntumachine\username
```

For example, if the Ubuntu machine is named ubuntuerv, and the username is geek, your share path would be \\ubuntuerv\geek

## LOSTPASSWORD

Sometimes it is necessary to get root access, for example when you have forgotten your password or changed something in `/etc/sudoers` and things do not work as expected.

Be careful, because this step will give you **full root access** to your system and you can really damage your system! Keep in mind that all the steps you see here can also be done by someone else!

Now let us start with a way that should work on any freshly installed Ubuntu system:

## *The Standard Way*

This procedure gives you a **full root shell**! You can damage your system if you are not careful!

1. When booting up press **ESC** at the grub prompt and use the arrow keys to select the rescue mode option and press **enter**.
2. This will boot the system in rescue mode and you should arrive at a prompt that looks like this
  - o root@something
3. To reset your password type this in
  - o passwd <username> and then enter you new password.
4. Once you are done resetting your password you can than switch back to the normal GUI mode by putting this in
  - o init 2